

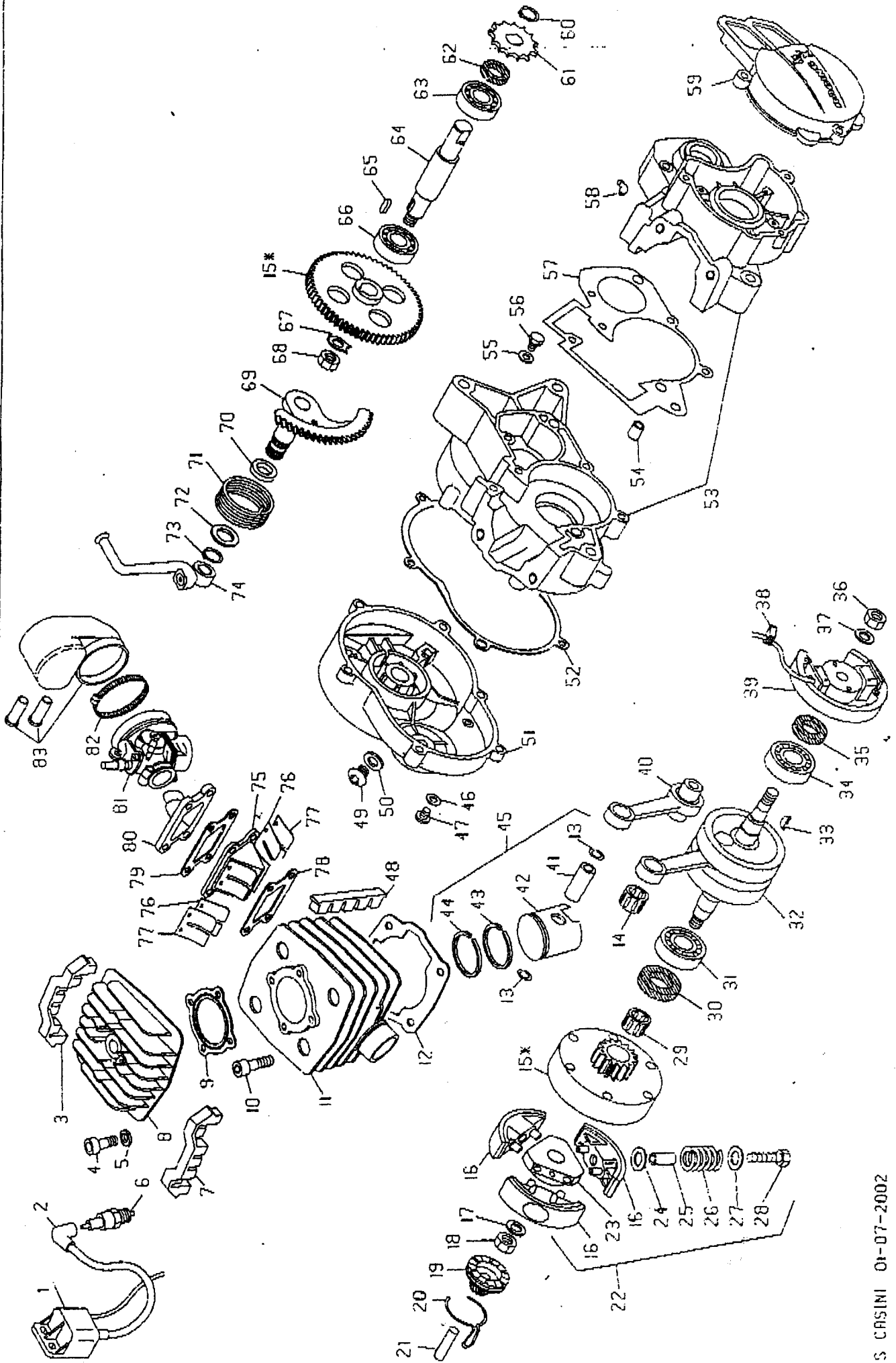


MOTORE MINITRIAL-2003

COD. 37-42826-4-00

DAL MOTORE N.

ES-M0174



S. CASINI 01-07-2002



# MOTORE MINITRIAL-2003

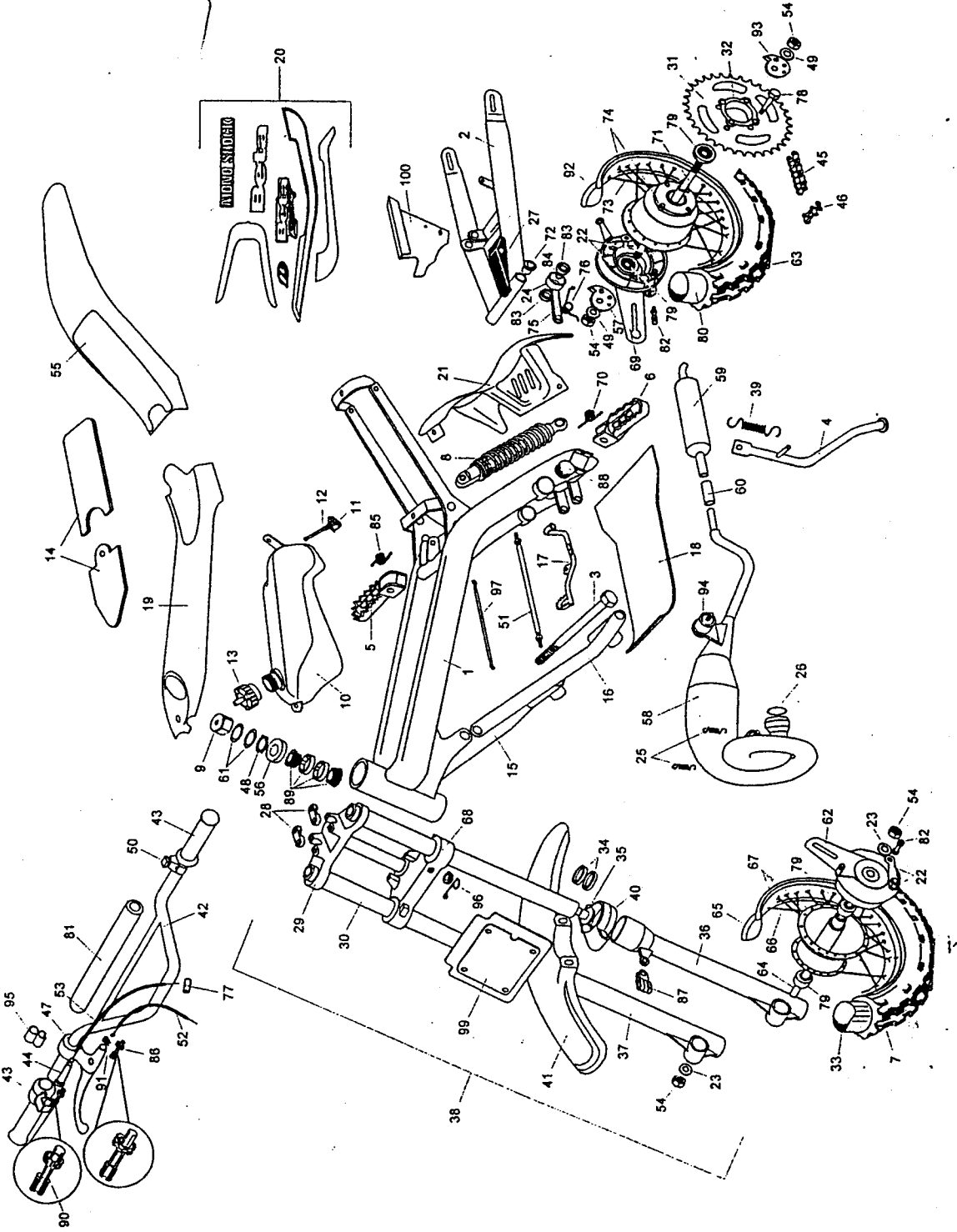
ES-M1174

COD. 37-42826-4-00 DAL MOTORE M.

N	CODICE	DESCRIZIONE	N	CODICE	DESCRIZIONE
1	11-20631	ROBINA RTE	48	16-21031	COMMA ANTIVIBRAZ CILINDRO
2	27-13512	RACCORDO CANDELA SCHEMATO	49	29-10290	TAPPO OLIO
3	16-21062	COMMA ANTIVIBRAZ TESTA POST	50	16-53600	GUARNIZIONE 16x22 5x1
4	31-45000	VITE TCCE M6x30	51	12-62113-0-33	COPEARCHIO FRAZIONE
5	27-10500	RONDELLA 6x13	52	16-71530	GUARNIZIONE COPEARCHIO FRAZIONE
6	12-25200	CANDELA AN 3C SCHEMATO	53	12-06311	CARTER
7	16-21061	COMMA ANTIVIBRAZ TESTA ANI	54	16-36500	GRANO RIFERIMENTO CARTER 9x10
8	29-12038-0-59	TESTA	55	16-50510	GUARNIZIONE ANNE 10x1 5x1
9	16-54100	GUARNIZIONE TESTA	56	11-56000	BULLONE SPECIALE
10	31-53890	VITE TCCE M6x20	57	16-55050	GUARNIZIONE CARTER
11	12-52504-0-59	CILINDRO (H.58)	58	27-23380	RACCORDO PER SFIRATO
12	16-61750	GUARNIZIONE CILINDRO-CARTER	59	12-70110-0-33	COPEARCHIO VOLANO
13	10-42010	ANELLO FERMA SPINDOTTO	60	28-23600	SEEGER 15E
14	16-11500	GRABIA 12x15x15	61	25-61112	PIGNONE CATENA Z 9
15	29-06917-8	TRASMISSIONE PRIMARIA C/CAMPANA	62	10-54000	ANELLO PARALLO 15x24x5
16	22-30105-8	MASSEITA	63	12-94000	CUSCINETTO 15x35x11
17	27-58500-0-60	RONDELLA SP. 10x17	64	10-26150	ALBERO RINVIO
18	13-20200	OROLO SPEC. 10x1,25x6	65	12-46160	CHIAVETTA 5x5x12
19	22-14540	MANICOTTO MH	66	12-94000	CUSCINETTO 15x35x11
20	22-58040	MOLLA MANICOTTO MH	67	27-74760	RONDELLA FERMARODO Ø14
21	25-43911	PERNO 8x32	68	13-28950	OROLO M14x1,25
22	15-08077-8	FRAZIONE COMPLETA	69	22-05084	MESSA IN MOTO
23	22-90019	MOZZO FRAZIONE	70	10-56015	ANELLO PARALLO 16x22x4
24	27-58061-0-15	RONDELLA SP. 8x15x0,15	71	22-79040	MOLLA RTTORNO LEVA MESSA IN MOTO
25	29-09577	TUBETTO PER MOLLE	72	27-67510	RONDELLA 16x25x1
26	22-37890	MOLLA FRAZIONE	73	28-23500	SEEGER 15E
27	27-58061-0-50	RONDELLA SP. 8x15x0,5	74	21-55112	LEVA MESSA IN MOTO
28	11-49511	BULLONE 6x25 AS	75	31-02120	VALVOLA ASPIRAZIONE COMPLETA
29	16-12905	CABRIA 15x18x17	76	21-15360	LAURELLA PER VALVOLA
30	10-62020	ANELLO PARALLO 17x35x7	77	25-59670	PIASTRINA PER LAURELLA
31	12-96000	CUSCINETTO 17x40x12	78	16-92550	GUARNIZIONE VALVOLA
32	10-00725	ALBERO MOTORE	79	16-03530	GUARNIZIONE RACCORDO CARBUR.
33	12-45000	CHIAVETTA 2 5x3 7	80	27-19742	RACCORDO CARBURATORE
34	12-96000	CUSCINETTO 17x40x12	81	12-01431	CARBURATORE OLLORATO SHA 15/15
35	10-56010	ANELLO PARALLO 15x24x7	82	15-14266	FASCETTA
36	13-19020	OROLO M10x1,25	83	12-24800	CUFFIA CARBURATORE CON TUBETTI
37	27-50500	RONDELLA			
38	16-31510	COMMO PASSAFILLO VOLANO			
39	31-03262	VOLANO MAGNETE			
40	11-03740-8	DIELLA COMPLETA			
41	28-93610	SPINDOTTO			
42	25-00264	PISTONE Ø 39,5 PER GHISA			
43	28-60160	SEGMENTO			
44	28-60160	SEGMENTO			
45	25-03410-8	PISTONE COMPLETO Ø 39,5 PER GHISA			
46	16-47500	GUARNIZIONE 6x12x1,5			
47	31-30490-0-51	VITE M6x8			

### PARTICOLARI NON FIGURANTI

20-02054	K17 COME ANTIVIBRAZIONE
28-06886-8	SERIE ANELLI PARALLO
28-08075-8	SERIE GUARNIZIONI
25-03415-8	PISTONE MAGGIORATO COMPLETO Ø40,4
25-80267	PISTONE MAGGIORATO Ø40,4
28-60171	SEGMENTO MAGGIORATO Ø40,4
28-60171	SEGMENTO MAGGIORATO Ø40,4



MINI TRIAL FRAME FROM 2002				NUMBER	CODE	ITEM	NUMBER	CODE	ITEM		
NUMBER	CODE	ITEM	NUMBER	CODE	ITEM	NUMBER	CODE	ITEM	NUMBER	CODE	ITEM
1	29.02622.057	Frame	41	25.14973.021	Front fender - 2002	81	16.23596.052	Handlebar pad			
2	15.49548.057	Swing arm	42	25.14973.063	Front fender - 2003	82					
3	25.47090.000	Swing arm pivot pin	43	12.00552.052	Handlebar	83	12.93380.000	Chain tensioner bush			
4	12.33153.057	Side stand	44	12.08820.000	Throttle with grips	84	11.26461.000	Chain tensioner inside bush			
5	25.33000.000	RHS footpeg	45	16.34100.000	Rubber grommet throttle	85	22.62010.000	RHS footpeg spring			
6	25.33050.000	LHS footpeg	46	12.07169.000	Chain - 110 links	86	27.26027.000	Front brake cable adjuster			
7	12.78255.000	Front tyre	47	22.11170.000	Chain link	87	25.25225.000	Front brake cable holder			
8	10.03262.053	Rear shock	48	21.02095.000	Front brake lever assembly	88	16.31010.000	Swing arm dust seal			
9	13.30970.000	Steering head nut	49	16.20625.000	Steering head plug	89	12.93458.000	Steering head bearings			
10	28.05417.059	Petrol tank	50	27.59907.000	Rear wheel axle washer	90	27.26026.000	Throttle cable adjuster			
11	27.79600.000	Petrol tap	51	18.84985.000	Kill switch	91					
12	16.50550.000	Petrol tap O-ring	52	29.15046.000	Throttle cable	92	12.42205.000	Rear rim			
13	29.00525.059	Petrol cap	53	29.13174.000	Front brake cable	93	29.11891.000	LHS chain adjuster			
14	28.00962.059	Seat	54	29.15046.000	Throttle cable	94	28.92151.000	Exhaust pipe mount			
15	29.11333.057	RHS front downtube	55	13.21150.000	Axle nut - front and rear	95	28.91090.000	Petrol tank breather pipe mount			
16	29.11343.057	LHS front downtube	56	25.18853.021	Rear fender - 2002	96	22.39206.000	Front brake cable guide			
17	25.28091.000	Rear brake pedal	57	25.18853.018	Rear fender - 2003	97	18.01653.000	Kill button extension			
18	12.32211.000	Bash plate	58	28.17760.000	Dust seal steering head	98					
19	12.88515.021	Tank cover - 2002	59	29.11892.000	RHS chain adjuster	99	22.28850.021	Front number plate - 2002			
20	13.33187.000	Decal set complete - 2002	60	22.27064.000	Exhaust pipe	100	22.28852.118	Front number plate - 2003			
21	25.24422.000	Mudflap - rear shock	61	59.28.91978.000	Muffler	101	12.84770.052	Chain guard			
22	12.42012.000	Brake shoe set - front and rear	62	60.22.1210.000	Exhaust pipe rubber sleeve	102	29.10580.000	Front fork plug			
23	27.59908.000	Front wheel washer	63	27.73791.000	Steering stem washer						
24	27.84250.000	Rear chain tensioner roller	64	10.68205.000	Front brake backing plate						
25	22.45550.000	Exhaust pipe spring	65	12.78256.000	Rear tyre						
26	10.67365.000	Exhaust pipe O-ring	66	25.59957.000	Front axle						
27	29.10095.059	Swing arm chain guide	67	12.42204.000	Front rim						
28	12.08272.057	Handlebar clamps	68	27.23824.000	Front wheel spokes						
29	29.50096.057	Top triple clamp	69	67.27.01388.052	Front wheel						
30	29.40268.000	Complete fork tube - LHS or RHS	70	12.09056.057	Lower triple clamp						
31	12.89216.000	Rear sprocket - 58T	71	69.10.68206.000	Rear brake backing plate						
32	15.38550.000	Rear sprocket retaining plate	72	70.22.62020.000	LHS footpeg spring						
33	12.15255.000	Front tube	73	71.25.57004.000	Rear axle						
34	20.02718.000	Front fork seal and dust seal	74	72.11.26460.000	Swing arm bush						
35	22.52698.000	Front fork spring	75	73.27.23826.000	Rear wheel spokes						
36	16.18278.057	Lower fork leg - LHS	76	74.27.04317.052	Rear wheel						
37	16.18268.057	Lower fork leg - RHS	77	75.29.11951.000	Chain tensioner						
38	15.03123.000	Front fork assembly complete	78	76.22.81113.000	Chain tensioner spring						
39	22.47101.000	Side stand spring	79	77							
40	15.14621.000	Front fender fixing clamp	80	78.11.51000.000	Rear sprocket bolt						
				79.12.93456.000	Wheel bearings - front and rear						
				80.12.15256.000	Rear wheel tube						